

ACP 1000

625 W / 1000 W / 1250 W Cyclorama Lights

Cyclorama light with asymmetrical reflector for use with **gel filter**.

The ACP of cyclorama lights features a unique combination of an asymmetrical reflector and 2, highly reflective side mirrors to provide high quality lighting for both studio and stage applications.

These fixtures are ideal for creating an homogenous light level or for stage set lighting, e.g.

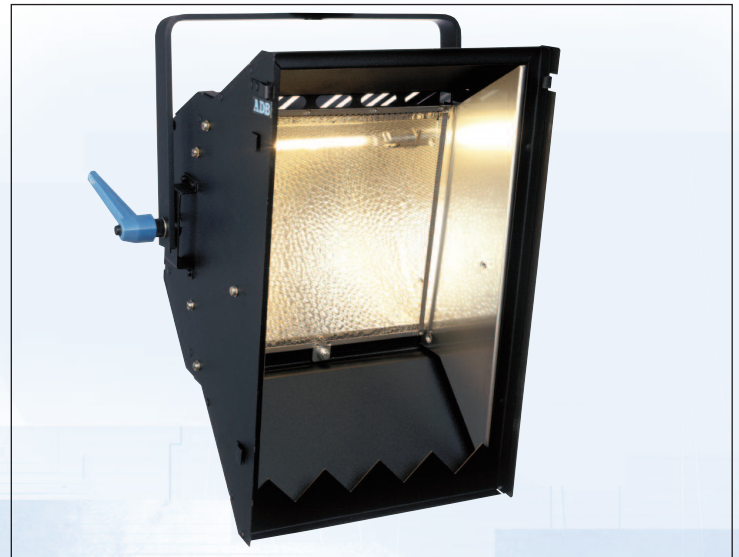
- vertical, even illumination of cyclorama or horizon screen
- diffused back lighting
- asymmetrical soft light

These compact and lightweight luminaires are designed for use with 625 W, 1000 W or 1250 W lamps.

Excellent ventilation by natural convection ensures long life of lamps and filters.

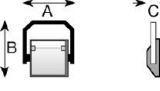



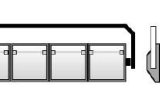

Flexibility is provided by a large choice of single, double, triple or quadruple units assembled in either horizontal, vertical or square formats.

Each combination can be supplied for manual or pole operation.



Supplied with :

- R7S Lampholder
- Safety grid with 3 mm meshing
- filter frame integrated
- 2 m power supply cable (2 x 1.5 + 1.5 mm²) without plug

ACP 1000 Cyclorama Lights (A x B x C)	Manual Operation	Pole Operation
 Single unit	ACP 1001 390 x 450 x 230 mm 5 kg	ACP 1001 P 395 x 450 x 230 mm 6 kg
 Horizontal double unit	ACP 1002 H 730 x 450 x 230 mm 11.5 kg	ACP 1002 H P 735 x 450 x 230 mm 12.5 kg
 Vertical double unit	ACP 1002 V 450 x 1010 x 230 mm 13 kg	ACP 1002 V P 455 x 1010 x 230 mm 14 kg
 Horizontal triple unit	ACP 1003 H 1015 x 450 x 230 mm 17.5 kg	ACP 1003 H P 1020 x 450 x 230 mm 19 kg
 Horizontal quadruple unit	ACP 1004 H 1310 x 450 x 230 mm 23 kg	ACP 1004 H P 1315 x 450 x 230 mm 25 kg
 Square quadruple unit	ACP 1004 C 730 x 1010 x 230 mm 25 kg	ACP 1004 C P 735 x 1010 x 230 mm 27 kg



ACP 1000

Specifications

Housing

- Housing made of welded steel sheets.
- High temperature resistant, electrostatically deposited matt black painting.
- Ventilation / heat sinks designed to avoid light spill.
- No noise during heating and cooling phases.

Filter Frame Cassette

- The filter frame for the ACP 1000 is integrated.

Clamping

- A strong steel yoke with effective clamping mechanism provides considerable resistance to unwanted movement and vibration. The luminaire can rotate all around its axis.

Pole Operation

- Built to EN 60598 2-17 standards.
- Smooth control without shocks or vibrations.
- Not sensitive to heat and tilt angle.
- DIN spigot included.

Optical System

- Asymmetrical reflector and side mirrors of pure, anodised aluminium.

Electromechanical Parts

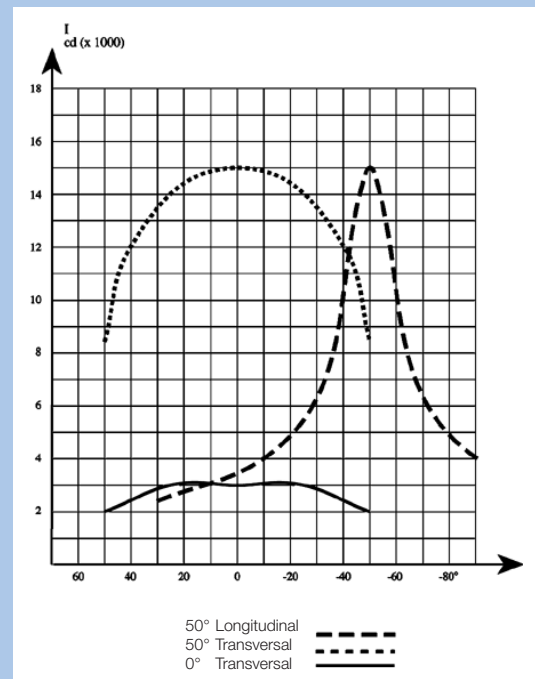
- R7S lampholders for 230 V / 625 W, 1000 W or 1250 W tubular halogen lamps.
- 2 m silicon power cable (2 x 1.5 + 1.5 mm²) without plug.

Safety / Reliability

- These equipments comply with all applicable European directives and carry a CE mark.
- Safety screws prevent accidental drop-out of accessories.
- Heat insulated handle.
- All metal components are protected against corrosion.

Photometric Data

Typicals values with lamp: 1250 W - 230 V - 3200° K



Accessories

- Vertical barndoors (set of 2 pieces, 1 right & 1 left) CFV/ACP
- Horizontal barndoor (one bottom part) CFH/ACP
- Hook clamp for \varnothing 21 to \varnothing 48 mm tubes A6
- Hook clamp for \varnothing 35 to \varnothing 50 mm tubes A20
- Hook clamp for \varnothing 35 to \varnothing 50 mm tubes A25
- Hook clamp for \varnothing 45 to \varnothing 60 mm tubes A30
- 1.2 m safety cable CAS 120/N

ADB - Your Partner for Light

Belgium N.V. ADB-TTV Technologies S.A.

(Group Headquarters) Leuvensesteenweg 585, B-1930 Zaventem
Tel : +32.2.709.32.11, Fax : +32.2.709.32.80, E-Mail : adb@adblighting.com

France ADB S.A.S.

Sales Office: 92, Avenue Jean Jaurès F-92120 Montrouge
Tel : +33.1.41.17.48.50, Fax : +33.1.42.53.54.76, E-Mail : adb.fr@adblighting.com

Factory & Group Logistics Centre: Zone industrielle Rouvroy F-02100 Saint-Quentin
Tel : +33.3.23.06.35.70, Fax : +33.3.23.67.66.56, E-Mail : adb.fr@adblighting.com

ADB
Lighting Technologies

DS-7023-E-06p Subject to modifications